

CITY CB1 REACH



IDA COURT

1 and 2 bedroom apartments
Ground Floor



Computer generated image of Ida Court is indicative only.



Interior photograph represents a similar Hill development. Specification varies.

Facilities shared across the City Reach development, including non-adopted private roads, parking areas, landscaped areas and other communal external infrastructure, will be maintained by an Estate Management Company which will be wholly owned by and within the control of the purchasers of City Reach once all homes have been sold and conveyed. Leaseholders of apartments will contribute towards the cost of maintaining shared estate areas and any internal communal areas, as set out within their lease.

We are unable to accommodate individual changes, additions or amendments to the specification, layout or plans of any property. Please note that it may not always be possible to obtain the exact products referred to in the specification; in such cases a similar alternative of equal quality will be provided. Hill reserves the right to make such changes where reasonably required.

- Painted front entrance door with multi-point locking system
- High efficiency triple glazed aluminium timber composite windows
- White painted flush internal doors with contemporary dual finish ironmongery

Decorative finishes

- Low profile shower tray with glass shower door
- Framed feature mirror with shelf to match vanity tops
- Large format wall and floor tiles
- Heated chrome towel rail

En-suite

- Bath with shower over and glass screen
- Framed feature mirror with shelf to match vanity tops
- Bath panel to match vanity tops
- Large format wall and floor tiles
- Heated chrome towel rail

Bathroom

Kitchen designs and layouts vary. Please speak to our Sales Executives for further information

- Induction hob
- Integrated single oven
- Integrated microwave
- Integrated dishwasher
- Integrated fridge/freezer
- Integrated cooker hood
- Stainless steel undermounted sink with contemporary brushed steel mixer tap
- LED feature lighting to wall units
- Washer/dryer (freestanding in hallway cupboard)

Kitchen

- Matt finish handleless units with soft close to doors and drawers
- Caesartop worktop with matching upstand and splashback behind hob

Floor finishes

- Built in mirrored wardrobe with sliding doors to principal bedroom
- Square cut skirting and architrave
- Walls painted in white emulsion
- Smooth ceilings in white emulsion

Heating and water

- Combined ventilation and heating system to provide property with filtered fresh air, heating, hot water and naturally reduced humidity levels
- Heated chrome towel rails to bathroom and en-suite

Electrical

- Downlights to entrance hall, kitchen/en-suite
- Pendant fittings to all bedrooms
- LED feature lighting to wall units in kitchen
- Shaver sockets to bathroom and en-suite
- TV, BT and data points to selected locations
- High level TV point to kitchen/dining/living room
- Openreach & Hyperoptic fibre connection to all properties for customer's choice of broadband provider
- Video entry system to every apartment, linked to main entrance door
- External lighting to balcony/terrace
- Hard-wired smoke and heat detectors
- Sprinkler system to all apartments
- Spur for customer's own installation of security alarm panel

General

- 10 year NHBC warranty
- 990 year lease
- A service charge will be payable for the maintenance of the shared facilities and communal areas

Construction

- Ida Court is traditionally constructed with brick and block outer walls, cavity filled with insulation and concrete
- Floors constructed of steel
- Exterior treatments are a combination of buff and black facing bricks with biodiverse green roofs
- Aluminium rain-water goods

Parking

- Apartment parking available to purchase on request
- Electric car charging points to all spaces

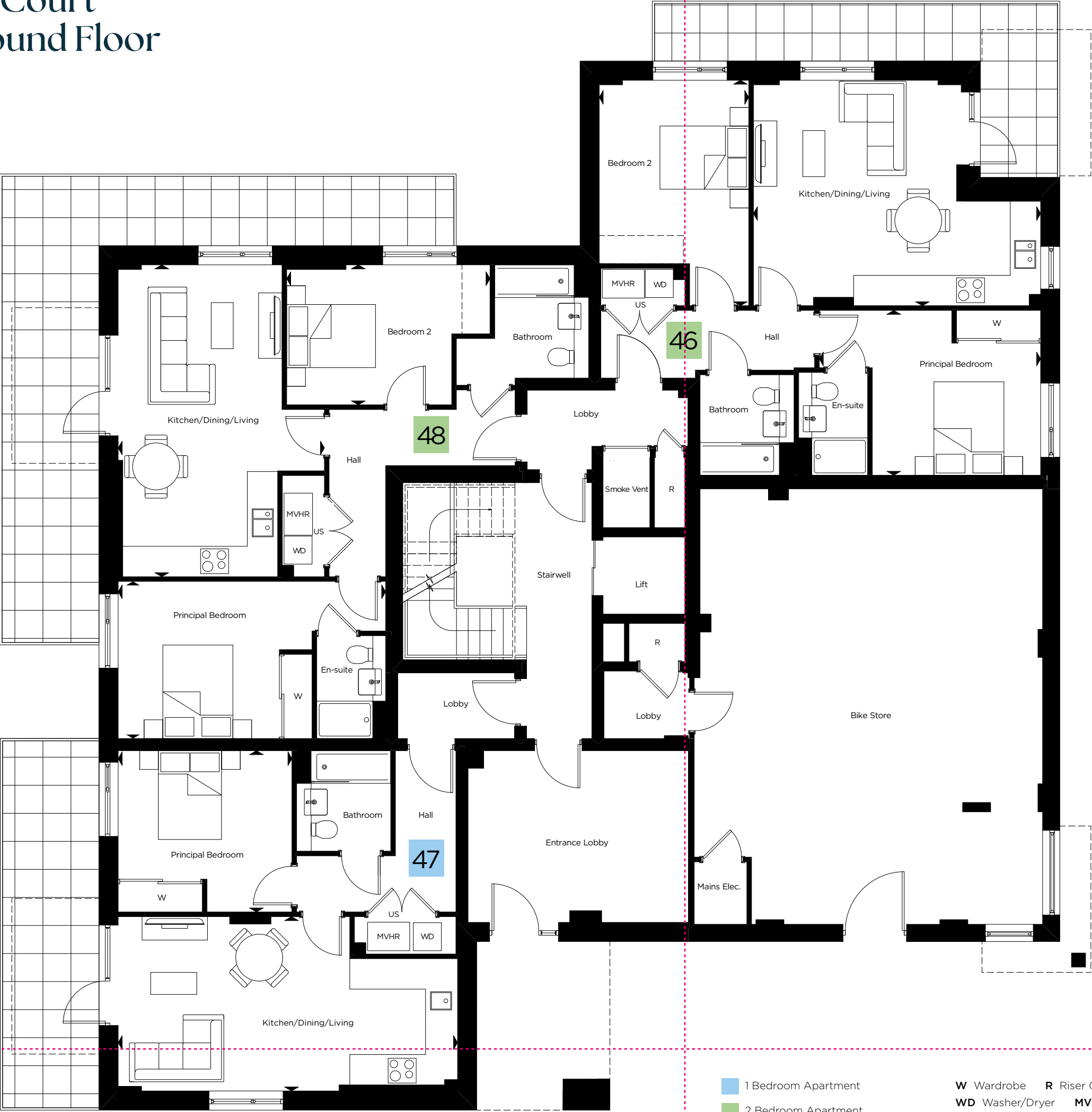
External finishes

- Paving to ground floor terrace
- Porcelain tiles to balcony

Communal areas

- Fob controlled access system to entrance lobby
- Lift access to all floors
- Cycle and bin storage space
- Letterboxes provided for all apartments within communal entrance lobby

Ida Court Ground Floor



Plot 46 - 2 bedroom apartment

70.7 sq m (761 sq ft)
Kitchen/Dining/Living
6.10m x 4.80m 20'0" x 15'9"
Principal Bedroom
4.70m x 3.50m 15'5" x 11'6"
Bedroom 2
4.80m x 3.15m 15'9" x 10'4"

Plot 47 - 1 bedroom apartment

52.7 sq m (567 sq ft)
Kitchen/Dining/Living
7.25m x 3.70m 23'9" x 12'2"
Principal Bedroom
3.70m x 3.45m 12'2" x 11'4"

Plot 48 - 2 bedroom apartment

73.6 sq m (792 sq ft)
Kitchen/Dining/Living
6.65m x 4.40m 21'10" x 14'5"
Principal Bedroom
5.70m x 3.35m 18'8" x 10'12"
Bedroom 2
4.30m x 2.95m 14'1" x 9'8"

- 1 Bedroom Apartment

2 Bedroom Apartment
- W

WD

Indicative wardrobe position
- R

MVHR
- US

Utility Store
- Washer/Dryer

MVHR

Mechanical Ventilation with Heat Recovery
- V

Visitor Parking
- Parking*

Parking
- Site Boundary
- Timber Fence

Metal Railing

Chain Link Fence

Mesh Fence
- Bin Storage

Timber Clad Bin Shelters

Cycle shelter

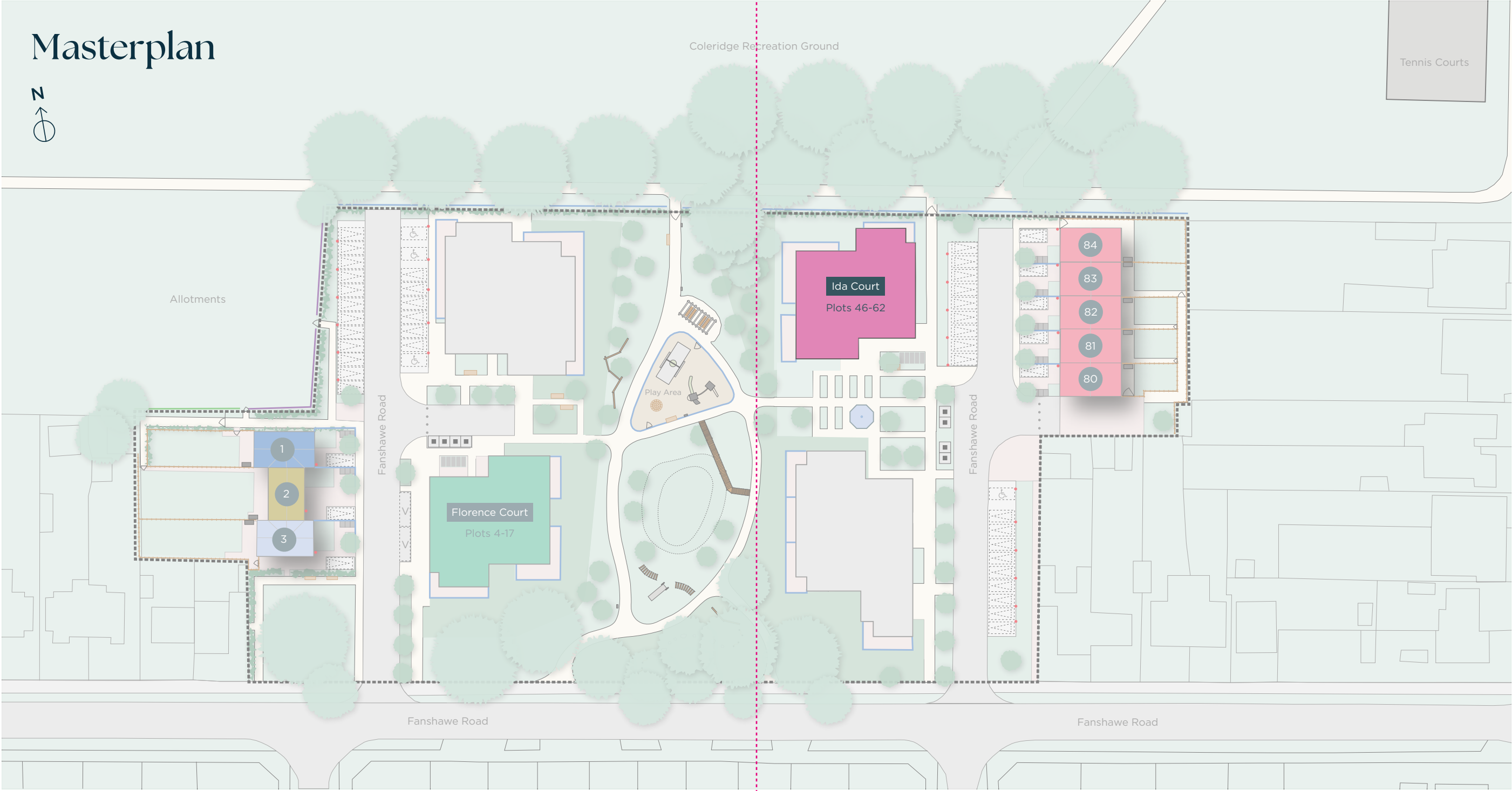
Underground Bins

Air Source Heat Pump

Disabled Parking

EV Parking Point

Masterplan



*Apartment parking available to purchase on request. All floorplans are not to scale. Layouts provide approximate measurements only and are subject to planning. Dimensions, which are taken from the indicated points of measurement, are for guidance only and are not intended to be used for window treatments or items of furniture. Bathroom and kitchen layouts are indicative only and are subject to change. Wardrobe size and position may vary. The total square footage given is an estimate only. In the event of your making an offer you should refer to the contract documentation for information and contractual provisions relating to net sales area. The information contained within this document does not constitute part of any offer, contract, or warranty. Whilst the plans have been prepared with all due care for the convenience of the intending purchaser, the information contained herein is a preliminary guide only.

- Ida Court 1 & 2 Bedroom Apartments

Florence Court 1 & 2 Bedroom Apartments

Affordable Homes
- The Parker 3 Bedroom House

The Riverside 3 Bedroom House
- The Mill 3 Bedroom House

The Coleridge 3 Bedroom Houses

CITY CB1 REACH



IDA COURT 2 bedroom apartments First Floor



Specification

Kitchen

- Matt finish handleless units with soft close to doors and drawers
- Caesartop with matching upstand and splashback behind hob
- Induction hob
- Integrated single oven
- Integrated microwave
- Integrated dishwasher
- Integrated fridge/freezer
- Integrated cooker hood
- Stainless steel undermounted sink with contemporary brushed steel mixer tap
- LED feature lighting to wall units
- Washer/dryer (freestanding in hallway cupboard)
- Kitchen designs and layouts vary. Please speak to our Sales Executives for further information

Floor finishes

- Built in mirrored wardrobe with sliding doors to principal bedroom
- Square cut skirting and architrave close to doors and drawers
- Walls painted in white emulsion
- Smooth ceilings in white emulsion

Heating and water

- Combined ventilation and heating system to provide property with filtered fresh air, heating, hot water and naturally reduced humidity levels
- Heated chrome towel rails to bathroom and en-suite

Electrical

- Downlights to entrance hall, kitchen/en-suite
- Pendant fittings to all bedrooms
- LED feature lighting to wall units in kitchen
- Shaver sockets to bathroom and en-suite
- TV, BT and data points to selected locations
- High level TV point to kitchen/dining/living room
- Openreach & Hyperoptic fibre connection to all properties for customer's choice of broadband provider
- Video entry system to every apartment, linked to main entrance door
- External lighting to balcony/terrace
- Hard-wired smoke and heat detectors
- Sprinkler system to all apartments
- Spur for customer's own installation of security alarm panel

En-suite

- Low profile shower tray with glass shower door
- Framed feature mirror with shelf to match vanity tops
- Large format wall and floor tiles
- Heated chrome towel rail

Decorative finishes

- Painted front entrance door with multi-point locking system
- High efficiency triple glazed aluminium timber composite windows
- White painted flush internal doors with contemporary dual finish ironmongery

General

- 10 year NHBC warranty
- 990 year lease
- A service charge will be payable for the maintenance of the shared facilities and communal areas

Construction

- Ida Court is traditionally constructed with brick and block outer walls, cavity filled with insulation
- Floors constructed of steel and concrete
- Exterior treatments are a combination of buff and black facing bricks with biodiverse green roofs
- Aluminium rain-water goods

Parking

- Apartment parking available to purchase on request
- Electric car charging points to all spaces

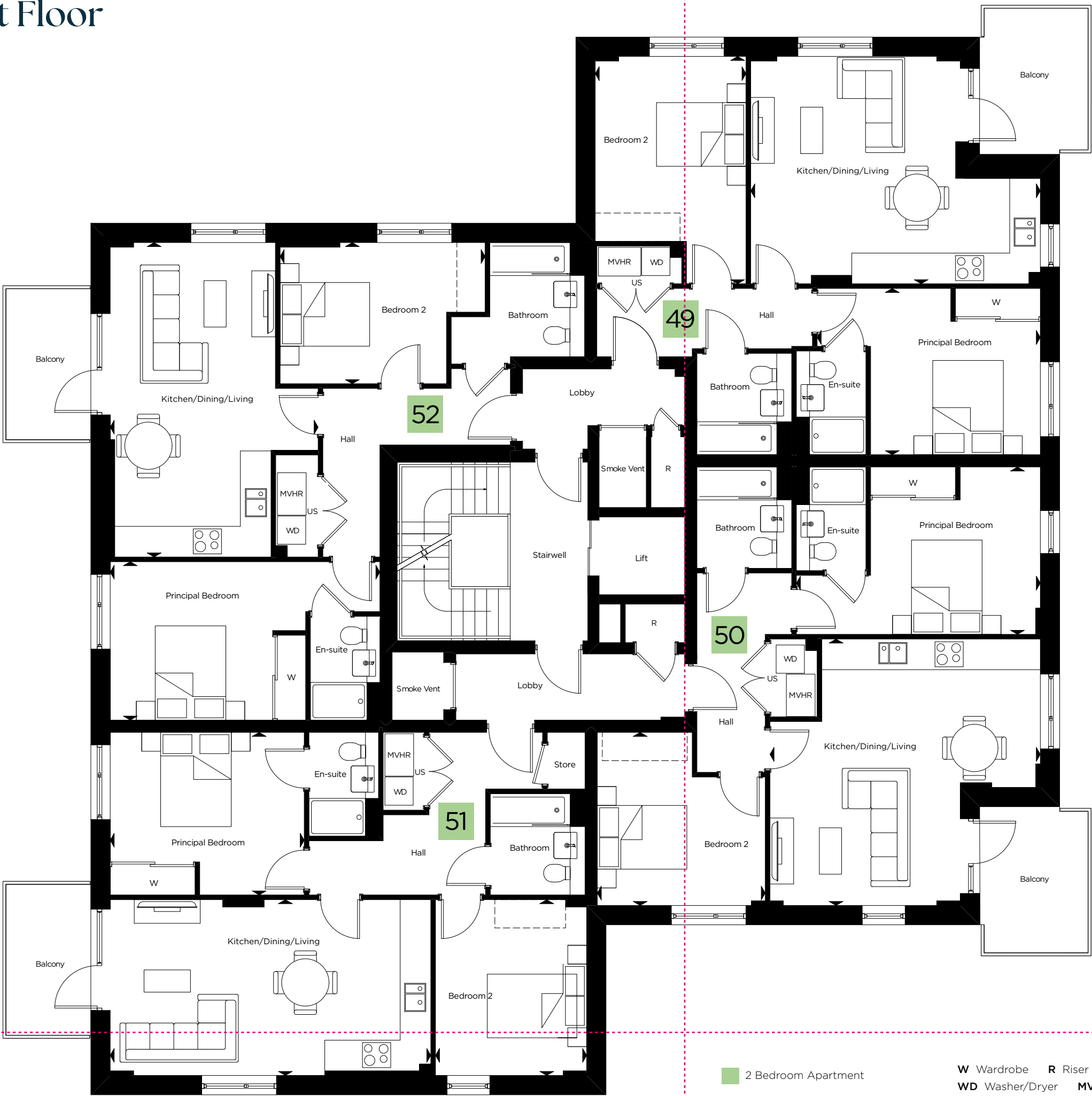
External finishes

- Porcelain tiles to balcony
- Paving to ground floor terrace

Communal areas

- Fob controlled access system to entrance lobby
- Lift access to all floors
- Cycle and bin storage space
- Letterboxes provided for all apartments within communal entrance lobby

Ida Court
First Floor



Plot 49 - 2 bedroom apartment
70.7 sq m (761 sq ft)
Kitchen/Dining/Living
6.10m x 4.80m 20'0" x 15'9"
Principal Bedroom
4.70m x 3.50m 15'5" x 11'6"
Bedroom 2
4.80m x 3.15m 15'9" x 10'4"

Plot 50 - 2 bedroom apartment
71.3 sq m (767 sq ft)
Kitchen/Dining/Living
5.70m x 5.65m 18'8" x 18'6"
Principal Bedroom
5.15m x 3.55m 16'11" x 11'8"
Bedroom 2
3.65m x 3.55m 11'12" x 11'8"

Plot 51 - 2 bedroom apartment
73.4 sq m (790 sq ft)
Kitchen/Dining/Living
6.80m x 3.70m 22'4" x 12'2"
Principal Bedroom
4.10m x 3.40m 13'5" x 11'2"
Bedroom 2
3.70m x 3.20m 12'2" x 10'6"

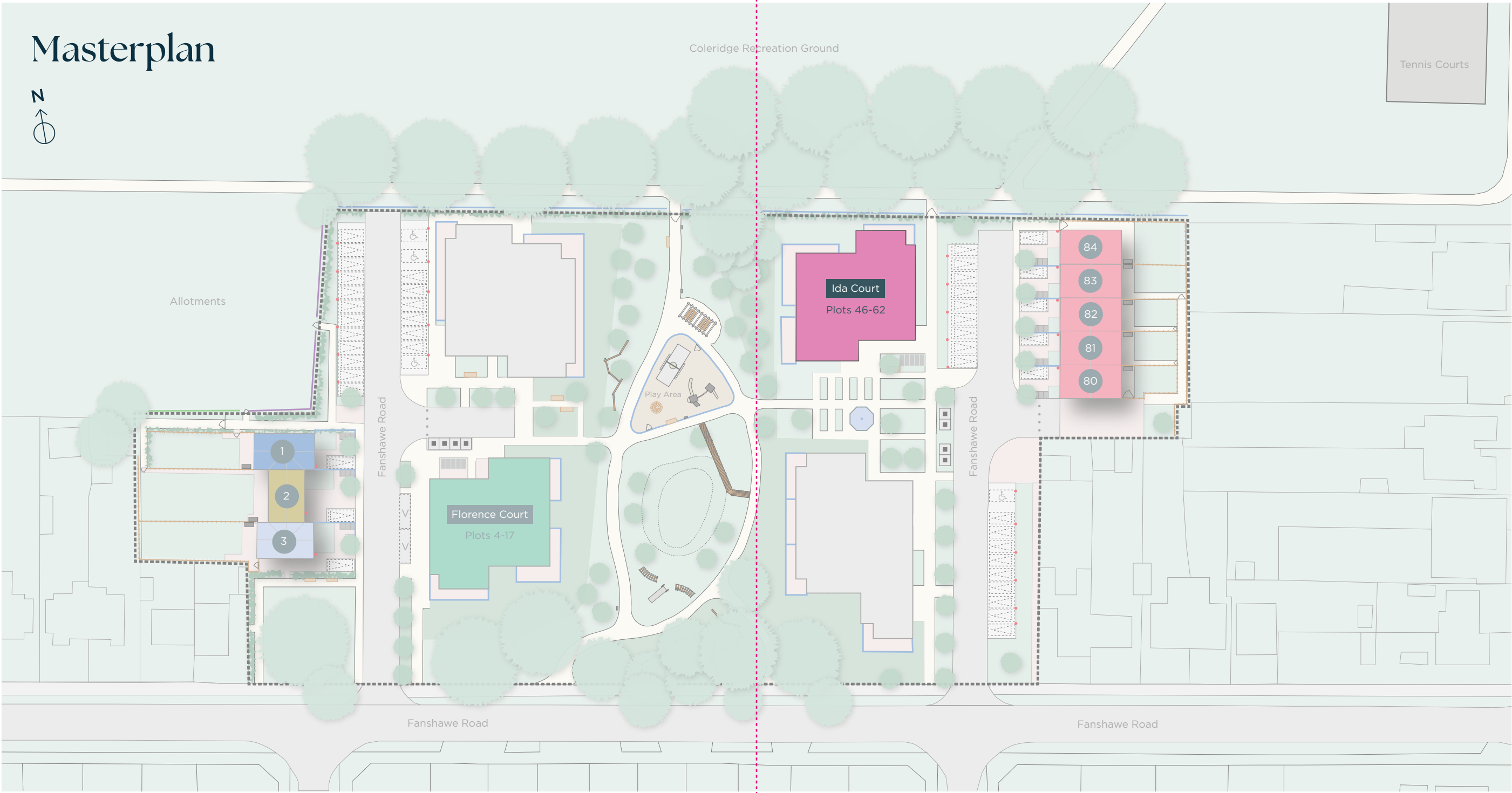
Plot 52 - 2 bedroom apartment
74.8 sq m (805 sq ft)
Kitchen/Dining/Living
6.65m x 4.40m 21'10" x 14'5"
Principal Bedroom
5.70m x 3.35m 18'8" x 10'12"
Bedroom 2
4.30m x 2.95m 14'1" x 9'8"

■ 2 Bedroom Apartment

W Wardrobe R Riser Cupboard US Utility Store
WD Washer/Dryer MVHR Mechanical Ventilation with Heat Recovery
□ Indicative wardrobe position

V Visitor Parking □ Parking* - - Site Boundary — Timber Fence — Metal Railing — Chain Link Fence — Mesh Fence
■ Bin Storage ■ Timber Clad Bin Shelters ■ Cycle shelter ■ Underground Bins ■ Air Source Heat Pump ♿ Disabled Parking
● EV Parking Point

Masterplan



*Apartment parking available to purchase on request. All floorplans are not to scale. Layouts provide approximate measurements only and are subject to planning. Dimensions, which are taken from the indicated points of measurement, are for guidance only and are not intended to be used for window treatments or items of furniture. Bathroom and kitchen layouts are indicative only and are subject to change. Wardrobe size and position may vary. The total square footage given is an estimate only. In the event of your making an offer you should refer to the contract documentation for information and contractual provisions relating to net sales area. The information contained within this document does not constitute part of any offer, contract, or warranty. Whilst the plans have been prepared with all due care for the convenience of the intending purchaser, the information contained herein is a preliminary guide only.

- Apartments:**
- Ida Court 1 & 2 Bedroom Apartments
 - Florence Court 1 & 2 Bedroom Apartments
 - Affordable Homes
- Houses:**
- The Parker 3 Bedroom House
 - The Riverside 3 Bedroom House
 - The Mill 3 Bedroom House
 - The Coleridge 3 Bedroom Houses

CITY CB1 REACH



IDA COURT

2 bedroom apartments
Second Floor



Facilities shared across the City Reach development, including non-adopted private roads, parking areas, landscaped areas and other communal external infrastructure, will be maintained by an Estate Management Company which will be wholly owned by and within the control of the purchasers of City Reach once all homes have been sold and conveyed. Leaseholders of apartments will contribute towards the cost of maintaining shared estate areas and any internal communal areas, as set out within their lease.

We are unable to accommodate individual changes, additions or amendments to the specification, layout or plans of any property. Please note that it may not always be possible to obtain the exact products referred to in the specification; in such cases a similar alternative of equal quality will be provided. Hill reserves the right to make such changes where reasonably required.

Decorative finishes

- Painted front entrance door with multi-point locking system
- High efficiency triple glazed aluminium timber composite windows
- White painted flush internal doors with contemporary dual finish ironmongery

En-suite

- Low profile shower tray with glass shower door
- Framed feature mirror with shelf to match vanity tops
- Large format wall and floor tiles
- Heated chrome towel rail

Bathroom

- LED feature lighting to wall units
- Washer/dryer (freestanding in hallway cupboard)
- Kitchen designs and layouts vary; please speak to our Sales Executives for further information
- Integrated single oven
- Integrated microwave
- Integrated dishwasher
- Integrated fridge/freezer
- Integrated cooker hood
- Stainless steel undermounted sink with contemporary brushed steel mixer tap
- LED feature lighting to wall units

Kitchen

- Matt finish handleless units with soft close to doors and drawers
- Caesartop worktop with matching upstand and splashback behind hob
- Induction hob

Floor finishes

- Amtico flooring to entrance hall and kitchen/dining/living room
- Carpet to bedrooms
- Large format tiles to bathroom

Heating and water

- Combined ventilation and heating system to provide property with filtered fresh air, heating, hot water and naturally reduced humidity levels
- Heated chrome towel rails to bathroom and en-suite

Electrical

- Downlights to entrance hall, kitchen/en-suite
- Pendant fittings to all bedrooms
- LED feature lighting to wall units in kitchen
- Shaver sockets to bathroom and en-suite
- TV, BT and data points to selected locations
- High level TV point to kitchen/dining/living room
- Openreach & Hyperoptic fibre connection to all properties for customer's choice of broadband provider
- Video entry system to every apartment, linked to main entrance door
- External lighting to balcony/terrace
- Hard-wired smoke and heat detectors
- Sprinkler system to all apartments
- Spur for customer's own installation of security alarm panel

General

- 10 year NHBC warranty
- 990 year lease
- A service charge will be payable for the maintenance of the shared facilities and communal areas

Construction

- Ida Court is traditionally constructed with brick and block outer walls, cavity filled with insulation and concrete
- Floors constructed of steel
- Exterior treatments are a combination of buff and black facing bricks with biodiverse green roofs
- Aluminium rain-water goods

Parking

- Apartment parking available to purchase on request
- Electric car charging points to all spaces

Communal areas

- Paving to ground floor terrace

External finishes

- Porcelain tiles to balcony

Ida Court
Second Floor



Plot 53 - 2 bedroom apartment
70.7 sq m (761 sq ft)
Kitchen/Dining/Living
6.10m x 4.80m 20'0" x 15'9"
Principal Bedroom
4.70m x 3.50m 15'5" x 11'6"
Bedroom 2
4.80m x 3.15m 15'9" x 10'4"

Plot 54 - 2 bedroom apartment
71.1 sq m (765 sq ft)
Kitchen/Dining/Living
5.70m x 5.65m 18'8" x 18'6"
Principal Bedroom
5.15m x 3.55m 16'11" x 11'8"
Bedroom 2
3.65m x 3.55m 11'12" x 11'8"

Plot 55 - 2 bedroom apartment
73.4 sq m (790 sq ft)
Kitchen/Dining/Living
6.80m x 3.70m 22'4" x 12'2"
Principal Bedroom
4.10m x 3.40m 13'5" x 11'2"
Bedroom 2
3.70m x 3.20m 12'2" x 10'6"

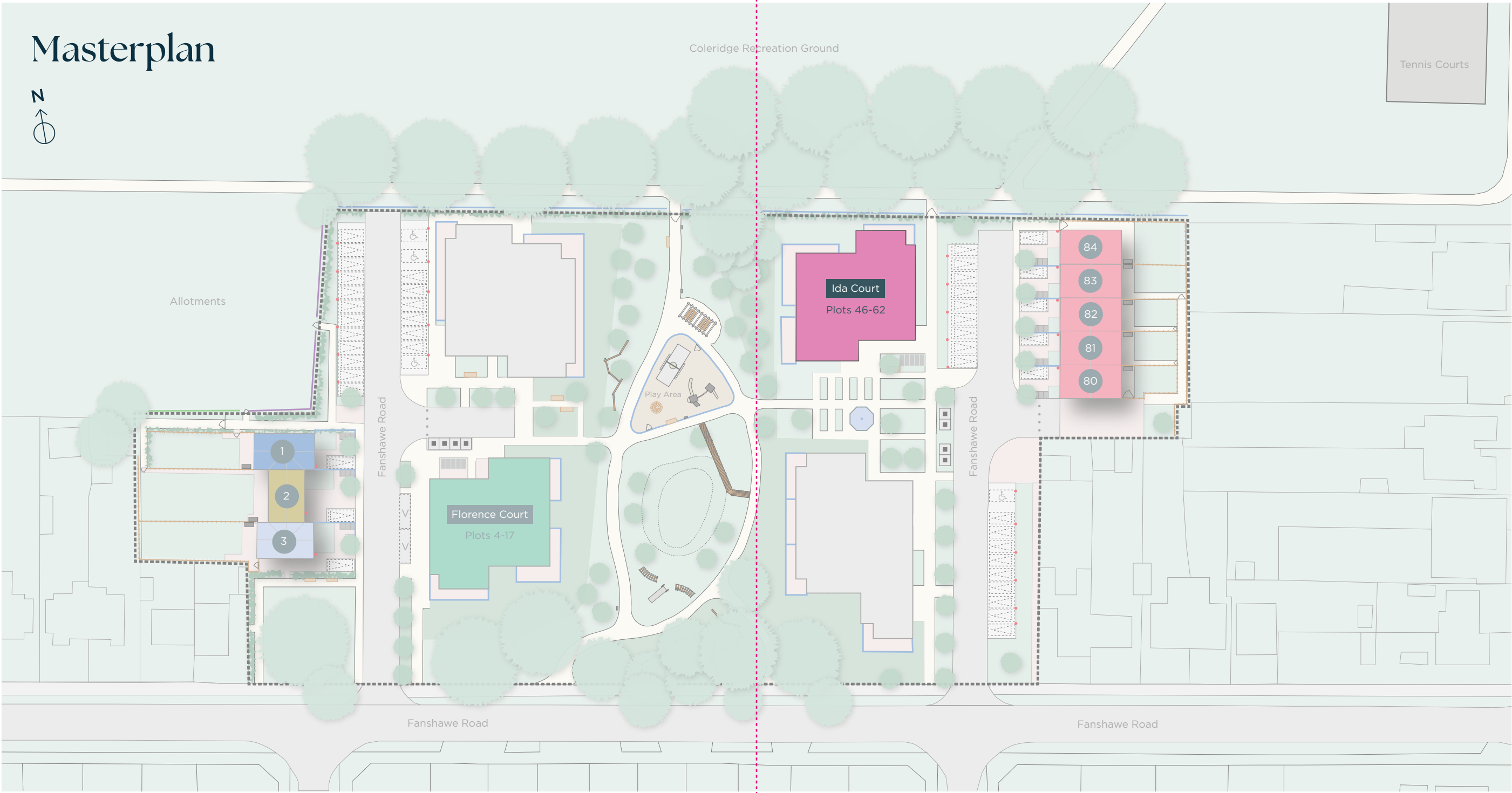
Plot 56 - 2 bedroom apartment
73.6 sq m (792 sq ft)
Kitchen/Dining/Living
6.65m x 4.40m 21'10" x 14'5"
Principal Bedroom
5.70m x 3.35m 18'8" x 10'12"
Bedroom 2
4.30m x 2.95m 14'1" x 9'8"

■ 2 Bedroom Apartment

W Wardrobe R Riser Cupboard US Utility Store
WD Washer/Dryer MVHR Mechanical Ventilation with Heat Recovery
□ Indicative wardrobe position

V Visitor Parking □ Parking* -- Site Boundary — Timber Fence — Metal Railing — Chain Link Fence — Mesh Fence
■ Bin Storage ■ Timber Clad Bin Shelters ■ Cycle shelter ■ Underground Bins ■ Air Source Heat Pump ♿ Disabled Parking
● EV Parking Point

Masterplan



*Apartment parking available to purchase on request. All floorplans are not to scale. Layouts provide approximate measurements only and are subject to planning. Dimensions, which are taken from the indicated points of measurement, are for guidance only and are not intended to be used for window treatments or items of furniture. Bathroom and kitchen layouts are indicative only and are subject to change. Wardrobe size and position may vary. The total square footage given is an estimate only. In the event of your making an offer you should refer to the contract documentation for information and contractual provisions relating to net sales area. The information contained within this document does not constitute part of any offer, contract, or warranty. Whilst the plans have been prepared with all due care for the convenience of the intending purchaser, the information contained herein is a preliminary guide only.

Apartments:

- Ida Court 1 & 2 Bedroom Apartments
- Florence Court 1 & 2 Bedroom Apartments
- Affordable Homes

Houses:

- The Parker 3 Bedroom House
- The Riverside 3 Bedroom House
- The Mill 3 Bedroom House
- The Coleridge 3 Bedroom Houses

CITY CB1 REACH



IDA COURT 2 bedroom apartments Third Floor



Computer generated image of Ida Court is indicative only.



Interior photograph represents a similar Hill development. Specification varies.

Facilities shared across the City Reach development, including non-adopted private roads, parking areas, landscaped areas and other communal external infrastructure, will be maintained by an Estate Management Company which will be wholly owned by and within the control of the purchasers of City Reach once all homes have been sold and conveyed. Leaseholders of apartments will contribute towards the cost of maintaining shared estate areas and any internal communal areas, as set out within their lease.

We are unable to accommodate individual changes, additions or amendments to the specification, layout or plans of any property. Please note that it may not always be possible to obtain the exact products referred to in the specification; in such cases a similar alternative of equal quality will be provided. Hill reserves the right to make such changes where reasonably required.

<ul style="list-style-type: none">• Painted front entrance door with multi-point locking system• High efficiency triple glazed aluminium timber composite windows• White painted flush internal doors with contemporary dual finish ironmongery	<h3>Decorative finishes</h3> <ul style="list-style-type: none">• Low profile shower tray with glass shower door• Framed feature mirror with shelf to match vanity tops• Large format wall and floor tiles• Heated chrome towel rail
<ul style="list-style-type: none">• Video entry system to every apartment, linked to main entrance door• External lighting to balcony/terrace• Hard-wired smoke and heat detectors• Sprinkler system to all apartments• Spur for customer's own installation of security alarm panel	<h3>En-suite</h3> <ul style="list-style-type: none">• Bath with shower over and glass screen• Framed feature mirror with shelf to match vanity tops• Bath panel to match vanity tops• Large format wall and floor tiles• Heated chrome towel rail
<ul style="list-style-type: none">• 10 year NHBC warranty• 990 year lease• A service charge will be payable for the maintenance of the shared facilities and communal areas	<h3>Bathroom</h3> <p>Kitchen designs and layouts vary. Please speak to our Sales Executives for further information</p> <ul style="list-style-type: none">• Integrated single oven• Integrated microwave• Integrated dishwasher• Integrated fridge/freezer• Integrated cooker hood• Stainless steel undermounted sink with contemporary brushed steel mixer tap• LED feature lighting to wall units• Washer/dryer (freestanding in hallway cupboard)
<h3>General</h3> <ul style="list-style-type: none">• 10 year NHBC warranty• 990 year lease• A service charge will be payable for the maintenance of the shared facilities and communal areas	<h3>Electrical</h3> <ul style="list-style-type: none">• Combined ventilation and heating system to provide property with filtered fresh air, heating, hot water and naturally reduced humidity levels• Heated chrome towel rails to bathroom and en-suite
<h3>Construction</h3> <ul style="list-style-type: none">• Apartment parking available to all spaces• Electric car charging points to all spaces	<h3>Heating and water</h3> <ul style="list-style-type: none">• Amtico flooring to entrance hall and kitchen/dining/living room• Carpet to bedrooms• Large format tiles to bathroom• Integrated cooker hood• Stainless steel undermounted sink with contemporary brushed steel mixer tap• LED feature lighting to wall units• Washer/dryer (freestanding in hallway cupboard)
<h3>Parking</h3> <ul style="list-style-type: none">• Fob controlled access system to entrance lobby• Lift access to all floors• Cycle and bin storage space• Letterboxes provided for all apartments within communal entrance lobby	<h3>Floor finishes</h3> <ul style="list-style-type: none">• Built in mirrored wardrobe with sliding doors to principal bedroom• Square cut skirting and architrave• Walls painted in white emulsion• Smooth ceilings in white emulsion
<h3>Communal areas</h3> <ul style="list-style-type: none">• Paving to ground floor terrace• Porcelain tiles to balcony	<h3>Kitchen</h3> <ul style="list-style-type: none">• Matt finish handleless units with soft close to doors and drawers• Caesartop worktop with matching upstand and splashback behind hob• Induction hob
<h3>External finishes</h3>	

Ida Court
Third Floor



Plot 57 - 2 bedroom apartment
70.7 sq m (761 sq ft)
Kitchen/Dining/Living
6.10m x 4.80m 20'0" x 15'9"
Principal Bedroom
4.70m x 3.50m 15'5" x 11'6"
Bedroom 2
4.80m x 3.15m 15'9" x 10'4"

Plot 58 - 2 bedroom apartment
71.1 sq m (765 sq ft)
Kitchen/Dining/Living
5.70m x 5.65m 18'8" x 18'6"
Principal Bedroom
5.15m x 3.55m 16'11" x 11'8"
Bedroom 2
3.65m x 3.55m 11'12" x 11'8"

Plot 59 - 2 bedroom apartment
73.4 sq m (790 sq ft)
Kitchen/Dining/Living
6.80m x 3.70m 22'4" x 12'2"
Principal Bedroom
4.10m x 3.40m 13'5" x 11'2"
Bedroom 2
3.70m x 3.20m 12'2" x 10'6"

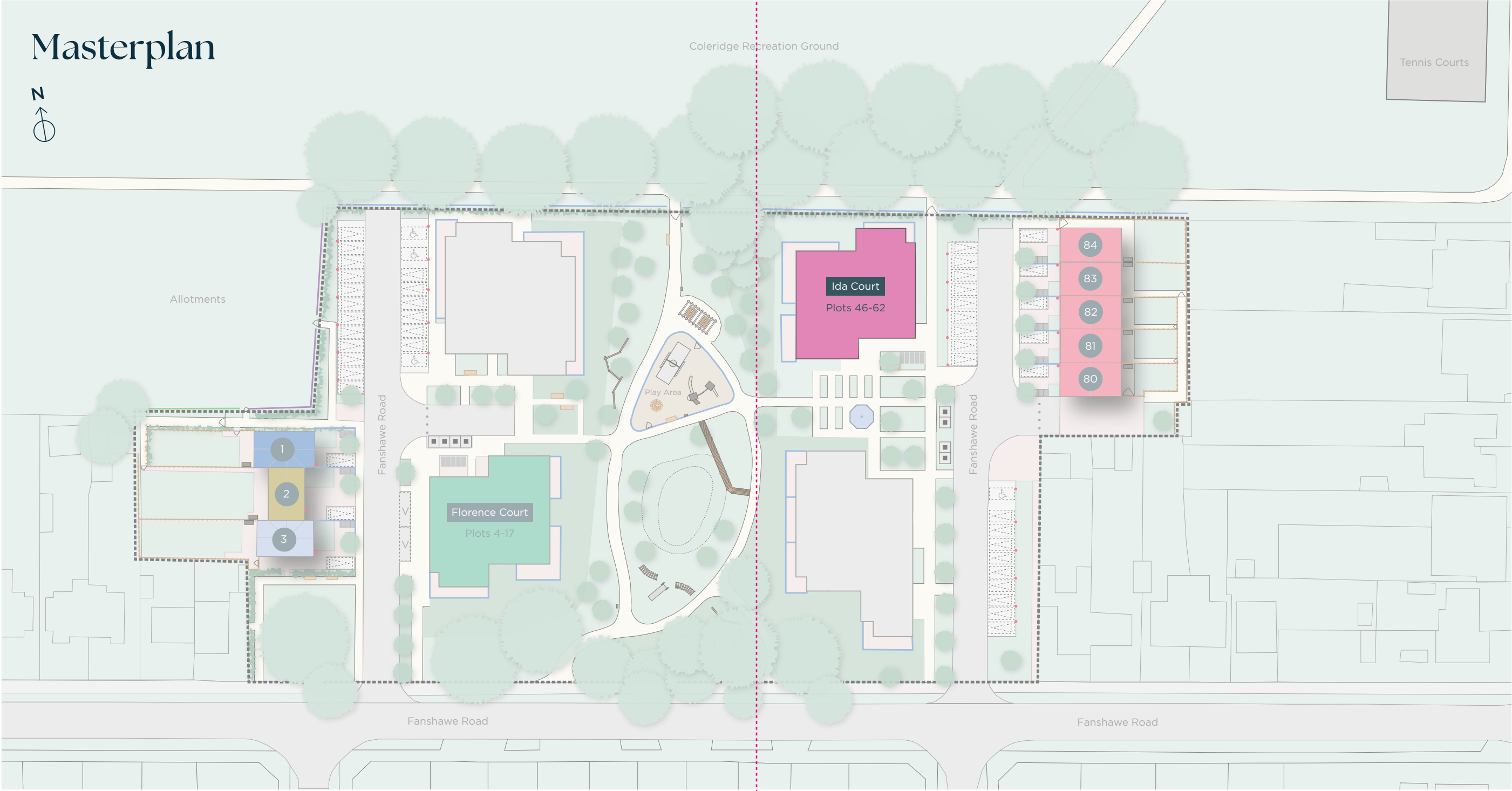
Plot 60 - 2 bedroom apartment
73.6 sq m (792 sq ft)
Kitchen/Dining/Living
6.65m x 4.40m 21'10" x 14'5"
Principal Bedroom
5.70m x 3.35m 18'8" x 10'12"
Bedroom 2
4.30m x 2.95m 14'1" x 9'8"

2 Bedroom Apartment

W Wardrobe R Riser Cupboard US Utility Store
WD Washer/Dryer MVHR Mechanical Ventilation with Heat Recovery
Indicative wardrobe position

V Visitor Parking Parking* -- Site Boundary Timber Fence Metal Railing Chain Link Fence Mesh Fence
Bin Storage Timber Clad Bin Shelters Cycle shelter Underground Bins Air Source Heat Pump Disabled Parking
EV Parking Point

Masterplan



*Apartment parking available to purchase on request. All floorplans are not to scale. Layouts provide approximate measurements only and are subject to planning. Dimensions, which are taken from the indicated points of measurement, are for guidance only and are not intended to be used for window treatments or items of furniture. Bathroom and kitchen layouts are indicative only and are subject to change. Wardrobe size and position may vary. The total square footage given is an estimate only. In the event of your making an offer you should refer to the contract documentation for information and contractual provisions relating to net sales area. The information contained within this document does not constitute part of any offer, contract, or warranty. Whilst the plans have been prepared with all due care for the convenience of the intending purchaser, the information contained herein is a preliminary guide only.

Apartments:

- Ida Court 1 & 2 Bedroom Apartments
- Florence Court 1 & 2 Bedroom Apartments
- Affordable Homes

Houses:

- The Parker 3 Bedroom House
- The Riverside 3 Bedroom House
- The Mill 3 Bedroom House
- The Coleridge 3 Bedroom Houses

CITY CB1 REACH



IDA COURT 2 bedroom apartments Fourth Floor



Facilities shared across the City Reach development, including non-adopted private roads, parking areas, landscaped areas and other communal external infrastructure, will be maintained by an Estate Management Company which will be wholly owned by and within the control of the purchasers of City Reach once all homes have been sold and conveyed. Leaseholders of apartments will contribute towards the cost of maintaining shared estate areas and any internal communal areas, as set out within their lease.

We are unable to accommodate individual changes, additions or amendments to the specification, layout or plans of any property. Please note that it may not always be possible to obtain the exact products referred to in the specification; in such cases a similar alternative of equal quality will be provided. Hill reserves the right to make such changes where reasonably required.

Decorative finishes

- Painted front entrance door with multi-point locking system
- High efficiency triple glazed aluminium timber composite windows
- White painted flush internal doors with contemporary dual finish ironmongery

En-suite

- Low profile shower tray with glass shower door
- Framed feature mirror with shelf to match vanity tops
- Large format wall and floor tiles
- Heated chrome towel rail

Bathroom

- Induction hob
- Integrated single oven
- Integrated microwave
- Integrated dishwasher
- Integrated fridge/freezer
- Integrated cooker hood
- Stainless steel undermounted sink with contemporary brushed steel mixer tap
- LED feature lighting to wall units
- Washer/dryer (freestanding in hallway cupboard)
- Kitchen designs and layouts vary. Please speak to our Sales Executives for further information

Kitchen

- Matt finish handleless units with soft close to doors and drawers
- Caesartop worktop with matching upstand and splashback behind hob
- Built in mirrored wardrobe with sliding doors to principal bedroom
- Square cut skirting and architrave
- Walls painted in white emulsion
- Smooth ceilings in white emulsion

Floor finishes

- Amtico flooring to entrance hall and kitchen/dining/living room
- Carpet to bedrooms
- Large format tiles to bathroom
- Integrated cooker hood
- Stainless steel undermounted sink with contemporary brushed steel mixer tap

Heating and water

- Combined ventilation and heating system to provide property with filtered fresh air, heating, hot water and naturally reduced humidity levels
- Heated chrome towel rails to bathroom and en-suite

Electrical

- Downlights to entrance hall, kitchen/en-suite
- Dining/living room, bathroom and en-suite
- Pendant fittings to all bedrooms
- LED feature lighting to wall units in kitchen
- Shaver sockets to bathroom and en-suite
- TV, BT and data points to selected locations
- High level TV point to kitchen/dining/living room
- Openreach & Hyperoptic fibre connection to all properties for customer's choice of broadband provider
- Video entry system to every apartment, linked to main entrance door
- External lighting to balcony/terrace
- Hard-wired smoke and heat detectors
- Sprinkler system to all apartments
- Spur for customer's own installation of security alarm panel

General

- 10 year NHBC warranty
- 990 year lease
- A service charge will be payable for the maintenance of the shared facilities and communal areas

Construction

- Ida Court is traditionally constructed with brick and block outer walls, cavity filled with insulation
- Floors constructed of steel and concrete
- Exterior treatments are a combination of buff and black facing bricks with of buff and black facing bricks with biodiverse green roofs
- Aluminium rain-water goods

Parking

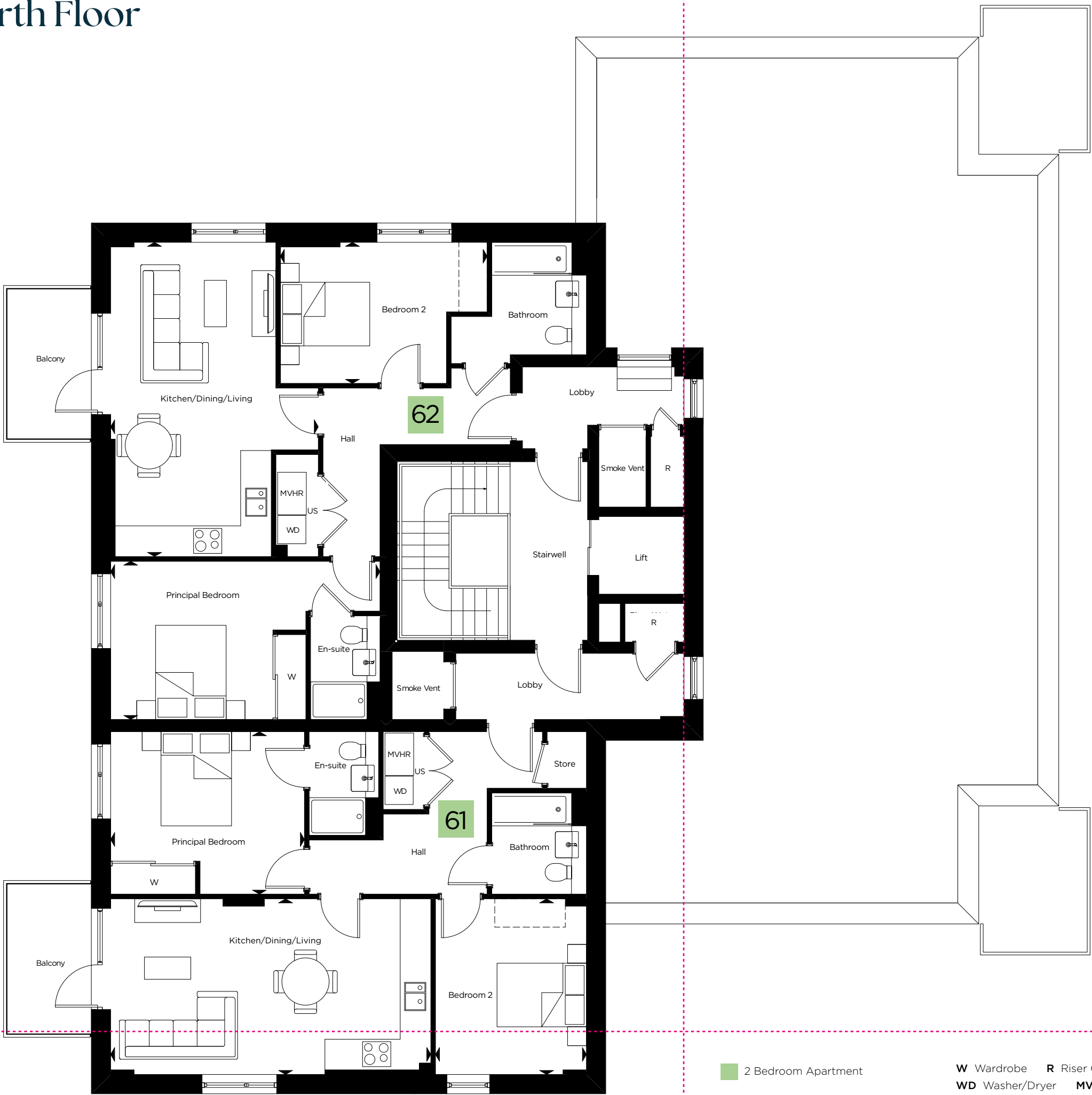
- Apartment parking available to purchase on request
- Electric car charging points to all spaces

Communal areas

- Paving to ground floor terrace
- Porcelain tiles to balcony

External finishes

Ida Court
Fourth Floor



Plot 61 - 2 bedroom apartment
73.5 sq m (791 sq ft)
Kitchen/Dining/Living
6.80m x 3.70m 22'4" x 12'2"
Principal Bedroom
4.10m x 3.40m 13'5" x 11'2"
Bedroom 2
3.70m x 3.20m 12'2" x 10'6"

Plot 62 - 2 bedroom apartment
73.2 sq m (788 sq ft)
Kitchen/Dining/Living
6.65m x 4.40m 21'10" x 14'5"
Principal Bedroom
5.70m x 3.35m 18'8" x 10'12"
Bedroom 2
4.35m x 2.95m 14'3" x 9'8"

- 2 Bedroom Apartment
- W

Wardrobe
- R

Riser Cupboard
- US

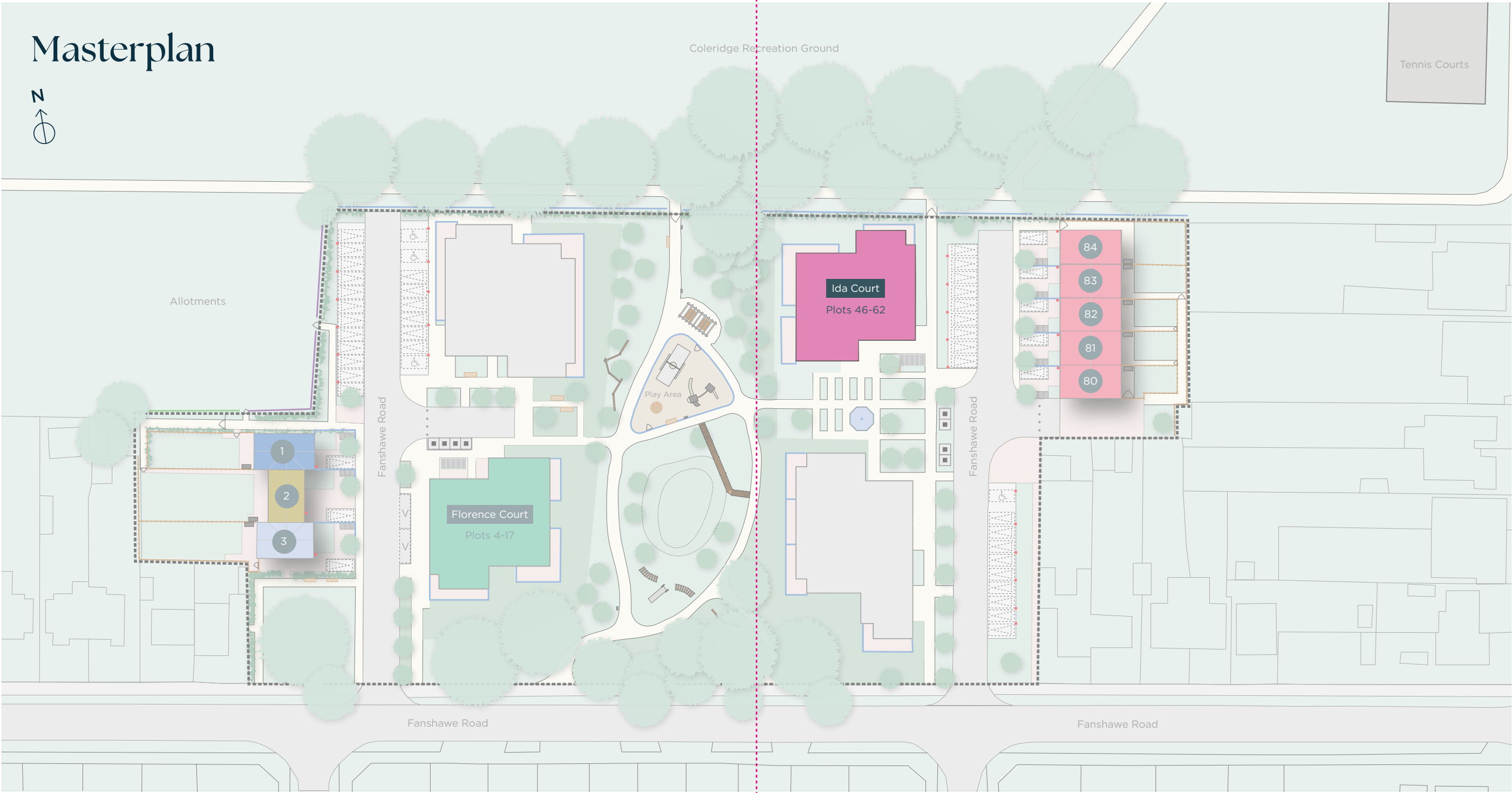
Utility Store
- WD

Washer/Dryer
- MVHR

Mechanical Ventilation with Heat Recovery
- Indicative wardrobe position
- V

Visitor Parking
- Parking*
- Site Boundary
- Timber Fence
- Metal Railing
- Chain Link Fence
- Mesh Fence
- Bin Storage
- Timber Clad Bin Shelters
- Cycle shelter
- Underground Bins
- Air Source Heat Pump
- Disabled Parking
- EV Parking Point

Masterplan



*Apartment parking available to purchase on request. All floorplans are not to scale. Layouts provide approximate measurements only and are subject to planning. Dimensions, which are taken from the indicated points of measurement, are for guidance only and are not intended to be used for window treatments or items of furniture. Bathroom and kitchen layouts are indicative only and are subject to change. Wardrobe size and position may vary. The total square footage given is an estimate only. In the event of your making an offer you should refer to the contract documentation for information and contractual provisions relating to net sales area. The information contained within this document does not constitute part of any offer, contract, or warranty. Whilst the plans have been prepared with all due care for the convenience of the intending purchaser, the information contained herein is a preliminary guide only.

- Apartments:**

Ida Court 1 & 2 Bedroom Apartments

Florence Court 1 & 2 Bedroom Apartments

Affordable Homes
- Houses:**

The Parker 3 Bedroom House

The Riverside 3 Bedroom House

The Mill 3 Bedroom House

The Coleridge 3 Bedroom Houses